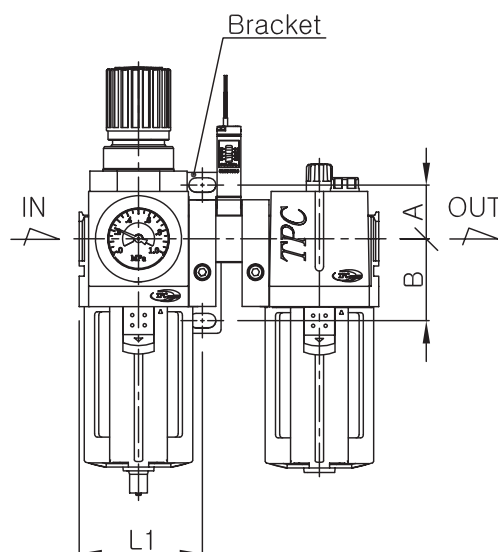
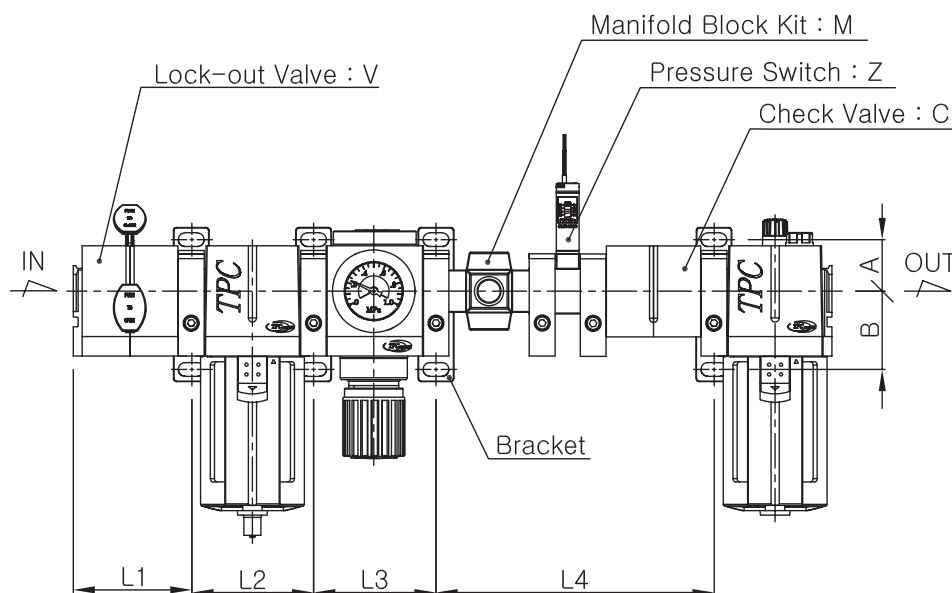


The mounting position of bracket (PC2~PC5 Series)



Attachment Type	C			M			V			Z			CM			CV				CZ			MV			
	L1	L2	L3	L1	L2	L3	L1	L2	L3	L1	L2	L3	L1	L2	L3	L1	L2	L3	L4	L1	L2	L3	L1	L2	L3	L4
PC2	40	40	40	40	40	40	40	40	40	40	40	12	40	40	80	40	40	40	40	40	40	52	40	40	40	40
PC3	56	56	56	56	56	49	56	56	56	56	56	13	56	56	105	56	56	56	56	56	56	69	56	56	56	49
PC4	72.7	75.4	74.4	72.7	75.4	65.4	72.7	75.4	75.4	72.7	75.4	31.4	72.7	75.4	139.8	72.7	75.4	75.4	74.4	72.7	75.4	105.8	72.7	75.4	75.4	65.4
PC5	—	—	—	—	—	—	92.7	95.4	95.4	92.7	95.4	36.4	—	—	—	—	—	—	—	—	—	—	—	—	—	—

Attachment Type	MZ			VZ				CMV				CMZ			CVZ				MVZ				CMVZ			
	L1	L2	L3	L1	L2	L3	L4	L1	L2	L3	L4	L1	L2	L3	L1	L2	L3	L4	L1	L2	L3	L4	L1	L2	L3	L4
PC2	40	40	52	40	40	40	12	40	40	40	80	40	40	92	40	40	40	52	40	40	40	52	40	40	40	92
PC3	56	56	62	56	56	56	13	56	56	56	105	56	56	118	56	56	56	69	56	56	56	62	56	56	56	118
PC4	72.7	75.4	96.8	72.7	75.4	75.4	31.4	72.7	75.4	75.4	139.8	72.7	75.4	171.2	72.7	75.4	75.4	105.8	72.7	75.4	75.4	96.8	72.7	75.4	75.4	171.2
PC5	—	—	—	92.7	95.4	95.4	36.4	—	—	—	—	—	—	—	—	—	—	—	—	—	—	—	—	—	—	—

Attachment Type	C		V		Z		CV		CZ		VZ		CVZ		
	L1	L2	L1	L2	L1	L2	L1	L2	L1	L2	L1	L2	L1	L2	L3
PC2A	40	40	40	40	40	40	40	40	40	52	40	40	40	40	52
PC3A	56	56	56	56	56	56	56	56	56	69	56	56	56	56	69
PC4A	72.7	74.4	72.7	75.4	72.7	72.7	75.4	74.4	72.7	105.8	72.7	75.4	72.7	75.4	105.8
PC5A	—	—	92.7	95.4	92.7	—	—	—	—	—	92.7	95.4	—	—	—

Attachment Type	M		V		Z		MV			MZ		VZ			MVZ		
	L1	L2	L1	L2	L1	L2	L1	L2	L3	L1	L2	L1	L2	L3	L1	L2	L3
PC2B	40	40	40	40	40	40	40	40	40	40	40	40	40	40	40	40	40
PC3B	56	56	56	56	56	56	56	56	56	56	56	56	56	56	56	56	56
PC4B	72.7	75.4	72.7	75.4	72.7	75.4	72.7	75.4	75.4	72.7	75.4	72.7	75.4	75.4	72.7	75.4	75.4
PC5B	—	—	92.7	95.4	92.7	95.4	—	—	—	—	—	92.7	95.4	95.4	—	—	—

L1 : from inlet to the mounting hole of 1st bracket

L2 : from the mounting hole of 1st bracket to 2nd bracket's

L3 : from the mounting hole of 2nd bracket to 3rd bracket's

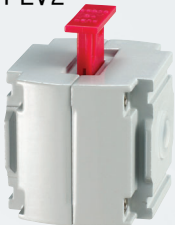
L4 : from the mounting hole of 3rd bracket to 4th bracket's

For the size of A and B, please refer to the dimensions.

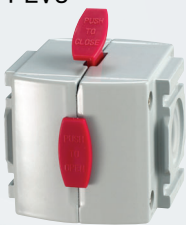
Modular Lock Out Valve

This valve provides a safety lockout to prevent accidental machine start-up. When the slider is shifted into the lockout position, inlet air is blocked and downstream air is exhausted to the atmosphere.

□ PLV2



□ PLV3



□ PLV4



□ PLV5



■ Standard Specifications

Specifications	PLV2	PLV3	PLV4	PLV5
Port size	1/8", 1/4"	1/4", 3/8"	3/8", 1/2"	3/4", 1"
RC(PT), NPT, G(PF)				
Type of exhaust	Silencer exhaust			
Proof pressure (MPa)	1.5(200psi)			
Max. operating pressure (MPa)	1.0(140psi)			
Regulating range (MPa)	0.05 ~ 1.0(7~140psi)			
Ambient and media temperature (°C)	-5 ~ 60(23~140°F)			
Weight (kg)	0.1(0.22lb)	0.24(0.53lb)	0.38(0.84lb)	0.88(1.94lb)

■ How to order

Series (Lock-out V/V)

Type of series

2	PC2 Series	4	PC4 Series
3	PC3 Series	5	PC5 Series

Thread

Blank	Rc(PT)
N	NPT
G	G(PF)

PLV 4 — * 04 — *

Option

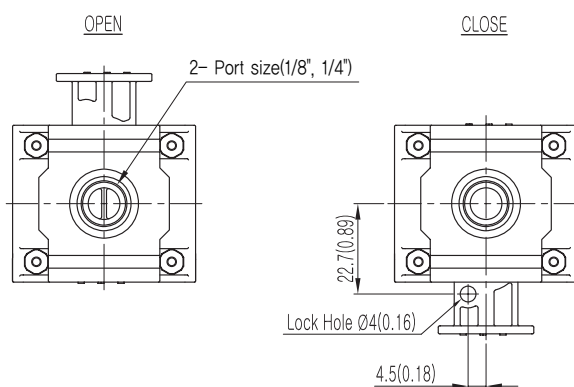
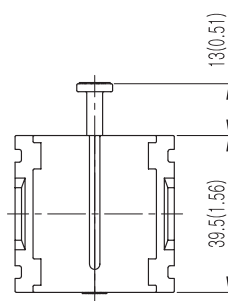
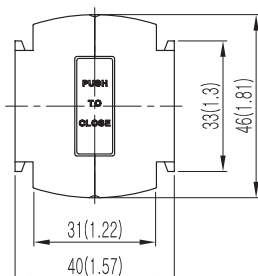
Blank	None
B	Clamp spacer kit

Note1) Separately packed, Not assembled.

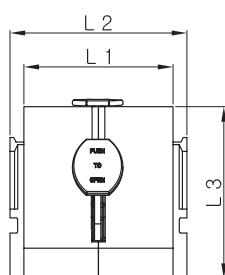
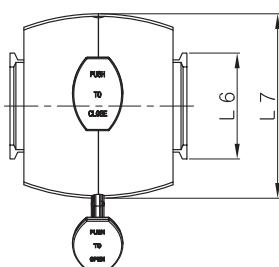
Port size

01	1/8	PC2 Series
02	1/4	PC2, 3 Series
03	3/8	PC3, 4 Series
04	1/2	PC4 Series
06	3/4	PC5 Series
10	1	PC5 Series

■ PLV2 Dimensions



■ PLV3, 4, 5 Dimensions



Series	Port size Rc(PT), NPT, G(PF)	Main dimensions								Remarks
		L 1	L 2	L 3	L 4	L 5	L 6	L 7	D	
PLV3	1/4, 3/8	46 (1.81)	56 (2.2)	49 (1.93)	56 (2.2)	70.2 (2.76)	33 (1.3)	56 (2.2)	7.5 (0.3)	
PLV4	3/8, 1/2	59 (2.32)	70 (2.76)	68 (2.68)	73 (2.87)	100 (3.94)	41.9 (1.65)	71 (2.8)	10 (0.39)	
PLV5	3/4, 1	74 (2.91)	89 (3.5)	90 (3.54)	98 (3.86)	131.9 (5.19)	49.6 (1.95)	98 (3.86)	10 (0.39)	

